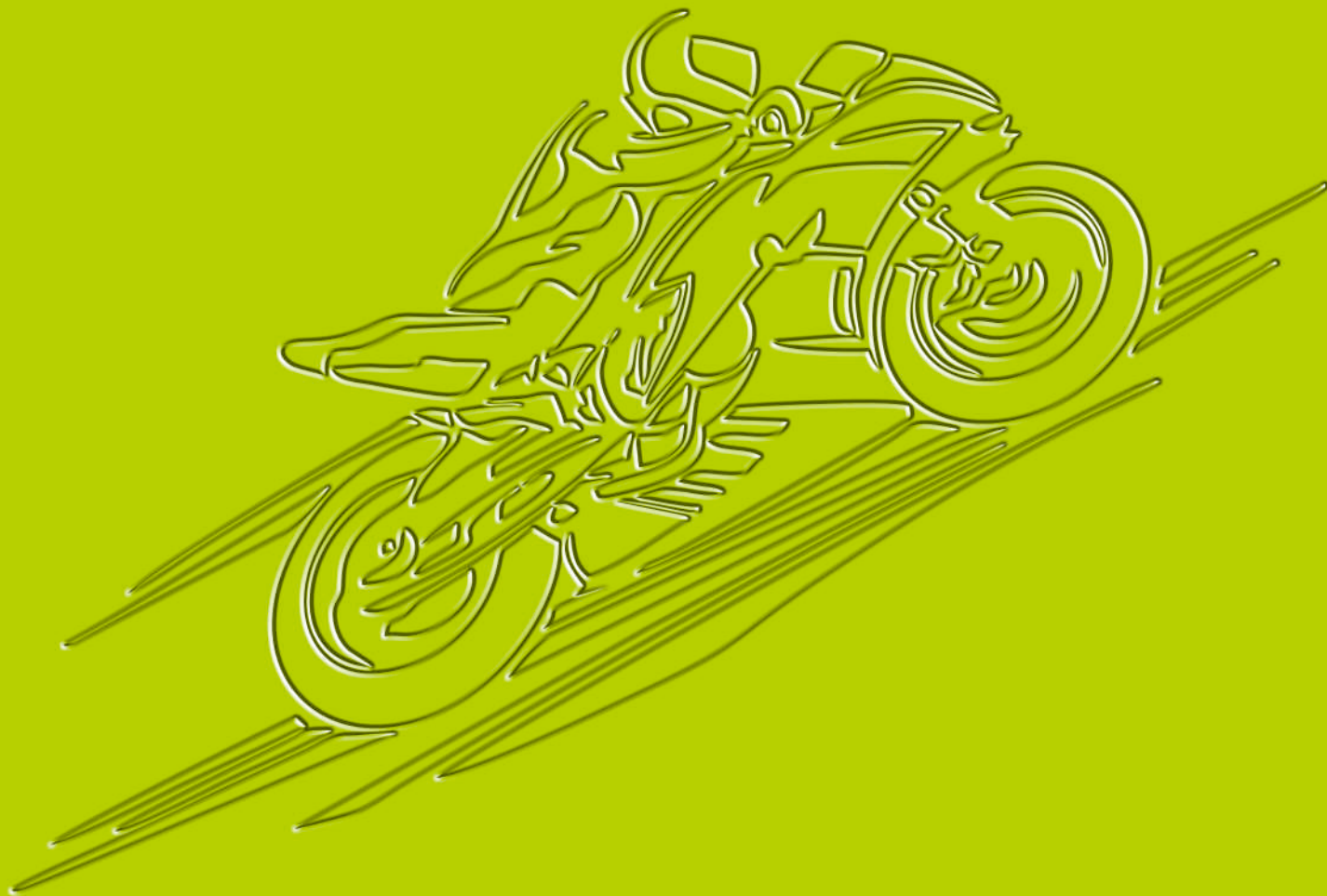


Akamzai®



2nd Edition
2019

Apparel Manufacturing Co.,

www.akamaigears.com



AKAMAI Group is an intense combination of spirit and the energy of Youth. The AKAMAI collection has grown to suits the diversified needs of many personal requirements and disciplines of riders.

Whilst achieving the difficult combination of safety and style all round functionality and value.

We have, since day one set out to make racing clothing that is practical, feels comfortable on and off the bike.

We are providing clothing that offers the best safety features and value to our customers.

We have grown into an organization manufacturing and exporting motorbike racing suits, Garments and Accessories over the worldwide.

In a short span we have earned the trust of business partners & costumers.

Now we are ready to explore new horizons in the art of motorbike racing garments and accessories.

Our R&D departments work to search new dimension in this field, its help to keep us in touch with new changings.

We have a lot range of designs materials and colors, in spite of our catalogues we are providing products on our customers requirements.

We can accommodate any customer advised specification and modification.

Along the way we've learnt a few thing too about designing and Developments, the best quality in this field.

Our journey is by no means complete in fact we think its only just beginning and that's what makes it interesting!

The AKAMAI philosophy is achieved and constantly improved upon by listening to and acting upon the feed back of riders and our customers.

The professional and aesthetic demands of any kind can be manufactured without any problem.

Under the supervision of our experts, every stitch is scanned to maintain the reputation of our company and the quality.

Welcome to



index

Items	Page #
Men Leather 1 Piece Suites	1 - 2
Men Leather 2 Piece Suites	3 - 4
Women Leather 1 Piece Suites	5
Men Leather Jackets	6 - 9
Women Leather Jackets	10 - 11
Men Textile Jackets	12 - 14
Men Textile Long Jackets	15 - 17
Men Textile Summer Jackets	18 - 19
Women Textile Jackets	19 - 21
Kids Textile Jackets	21
Men Textile Trousers	22
Men Textile Summer Trousers	23
Women Textile Trousers	24
Men Soft Shell Textile Jackets	25
Women Soft Shell Textile Jackets	25
Men Kevlar Fleece Hoodies	26
T-Shirts	26
Men Kevlar Denim Jackets	27
Men Kevlar Denim Trousers	28
Under Garments	29
Rain Wears	30
Safety Textile Vests.....	31
Protector Amors.....	32 - 33
Back Protector.....	33 - 34
Kidney Protector.....	35
Shin Guards	36
Leather & Textile Glove.....	37 - 45
MX Gloves.....	46 - 47
MX Jersey & Trouser.....	48
Riding Feet Gaurd	49 - 51
Textile Tank Luggage & Waist Bags	52
Sizing.....	53 - 55



AK-900



AK-901



About Availability

- Cowhide" Matte/Naked/Mild Leather
- Ventilation: Leather Panels Front & Back
- Stretchable Fabric
- Liner: Mesh Soft Touch
- Inner: Mobile Pockets
- Auto Lock YKK Zip Adjustable Sleeves & Waist
- Reflector Front & back for Night Safety
- TPR & Printed & Emossed Brands
- Removable Protector Plastics Shoulder Elbow,Knee, Hip & Back Extra Protection, Hump, Steel Mold, Removable Slider.



Sizes Men: 48 to 60

Sizes Women: 36 to 42

Sizes Kids: 6 to 14

Measurement Fit: 53



AK-902



AK-903



About Availability

- Cowhide" Matte/Naked/Mild Leather
- Ventilation: Leather Panels Front & Back
- Stretchable Fabric
- Liner: Mash Soft Touch
- Inner: Mobile Pockets
- Auto Lock YKK Zip Adjustable Sleeves & Waist
- Reflector Front & back for Night Safety
- TPR & Printed & Emossed Brands
- Removable Protector Plastics Shoulder Elbow, Knee, Hip & Back Extra Protection, Hump, Steel Mold, Removable Slider.



Sizes Men: 48 to 60

Sizes Women: 36 to 42

Sizes Kids: 6 to 14

Measurement Fit: 53



AK-941



AK-942



About Availability

- Cowhide" Matte/Naked/Mild Leather
- Ventilation: Leather Panels Front & Back
- Stretchable Fabric
- Liner: Mesh Soft Touch
- Inner: Mobile Pockets
- Auto Lock YKK Zip Adjustable Sleeves & Waist
- Long & Short Connection Zip for Trouser
- Reflector Front & back for Night Safety
- TPR & Printed & Emossed Brands
- Removable Protector Plastics Shoulder Elbow, Knee, Hip & Back Extra Protection, Hump, Steel Mold, Removable Slider.



Sizes Men: 48 to 60

Sizes Women: 36 to 42

Sizes Kids: 6 to 14

Measurement Fit: 53



AK-943



AK-944



About Availability

- Cowhide" Matte/Naked/Mild Leather
- Ventilation: Leather Panels Front & Back
- Stretchable Fabric
- Liner: Mesh Soft Touch
- Inner: Mobile Pockets
- Auto Lock YKK Zip Adjustable Sleeves & Waist
- Long & Short Connection Zip for Trouser
- Reflector Front & back for Night Safety
- TPR & Printed & Emossed Brands
- Removable Protector Plastics Shoulder,Elbow,Knee, Hip & Back Extra Protection, Carban Hump & Hump, Steel Mold, Removable Slider.



Sizes Men: 48 to 60

Sizes Women: 36 to 42

Sizes Kids: 6 to 14

Measurement Fit: 53



About Availability

- Cowhide" Matte/Naked/Mild Leather
- Ventilation: Leather Panels Front & Back
- Stretchable Fabric
- Liner: Mesh Soft Touch
- Inner: Mobile Pockets
- Auto Lock YKK Zip Adjustable Sleeves & Waist
- Reflector Front & back for Night Safety
- TPR & Printed & Emossed Brands
- Removable Protector Plastics Shoulder Elbow, Knee, Hip & Back Extra Protection, Hump, Steel Mold, Removable Slider.

AK-981



Sizes Men: 48 to 60

Sizes Women: 36 to 42

Sizes Kids: 6 to 14

Measurement Fit: 53



AK-1000



AK-1001

About Availability

- Cowhide "Charcoal / Natural / Matte / Naked Leather / Stretchable Fabric
- High Visibility: Reflector Front, Sleeves & Back For Night Vision
- Liner: Fix Air Mesh "soft touch"
- Lining: Removable Thermal Quilt / Mobile & Stuff Pockets
- Ventilation: Air-vent Front & Back Auto Lock Zips
- Protection: Removable EVO Protectors on the Shoulder, Elbow & Back, Steel Mold & Back Hump
- Other Features: Neoprene Collar & Cuff with Auto Lock Zip / Adjustable Waist / Embossed & Printed Brands / Long & Short Connection Zips for Trouser



Sizes Men: XS to 4 XL

Sizes Women: XS to XL

Measurement Fit: 53



AK-1002



AK-1003

About Availability

- Cowhide Matte / Naked / Mild Leather Stretchable Fabric
- High Visibility: Reflector Front, Sleeves & Back For Night Vision
- Liner: Fix Air Mesh "soft touch"
- Lining: Removable Thermal Quilt / Mobile & Stuff Pockets
- Ventilation: Air-vent Front & Back Auto Lock Zips
- Protection: Removable EVO Protectors on the Shoulder, Elbow & Back,
- Other Features: Neoprene Collar & Cuff with Auto Lock Zip / Adjustable Waist / Embossed & Printed Brands / Long & Short Connection Zips for Trouser



Sizes Men: XS to 4 XL
 Sizes Women: XS to XL
 Measurement Fit: 53



AK-1004



AK-1005

About Availability

- Cowhide Matte / Naked / Mild Leather Stretchable Fabric
- High Visibility: Reflector Front, Sleeves & Back For Night Vision
- Liner: Fix Air Mesh "soft touch"
- Lining: Removable Thermal Quilt / Mobile & Stuff Pockets
- Ventilation: Air-vent Front & Back Auto Lock Zips
- Protection: Removable EVO Protectors on the Shoulder, Elbow & Back,
- Other Features: Neoprene Collar & Cuff with Auto Lock Zip / Adjustable Waist / Embossed & Printed Brands / Long & Short Connection Zips for Trouser



Sizes Men: XS to 4 XL
 Sizes Women: XS to XL
 Measurement Fit: 53



AK-1006



AK-1007

About Availability

- Cowhide Matte / Naked / Mild Leather Stretchable Fabric
- High Visibility: Reflector Front, Sleeves & Back For Night Vision
- Liner: Fix Air Mesh "soft touch"
- Lining: Removable Thermal Quilt / Mobile & Stuff Pockets
- Ventilation: Air-vent Front & Back Auto Lock Zips
- Protection: Removable EVO Protectors on the Shoulder, Elbow & Back, Steel Mold & Back Hump
- Other Features: Neoprene Collar & Cuff with Auto Lock Zip / Adjustable Waist / Embossed & Printed Brands / Long & Short Connection Zips for Trousers



Sizes Men: XS to 4 XL

Sizes Women: XS to XL

Measurement Fit: 53



AK-1051



AK-1052



About Availability

- Cowhide Matte / Naked / Mild Leather Stretchable Fabric
- High Visibility: Reflector Front, Sleeves & Back For Night Vision
- Liner: Fix Air Mesh "soft touch"
- Lining: Removable Thermal Quilt / Mobile & Stuff Pockets
- Ventilation: Air-vent Front & Back Auto Lock Zips
- Protection: Removable EVO Protectors on the Shoulder, Elbow & Back,
- Other Features: Neoprene Collar & Cuff with Auto Lock Zip / Adjustable Waist / Embossed & Printed Brands / Long & Short Connection Zips for Trouser



Sizes Women: XS to XL

Measurement Fit: 53



AK-1053



About Availability

- Cowhide Matte / Naked / Mild Leather Stretchable Fabric
- High Visibility: Reflector Front, Sleeves & Back For Night Vision
- Liner: Fix Air Mesh "soft touch"
- Lining: Removable Thermal Quilt / Mobile & Stuff Pockets
- Ventilation: Air-vent Front & Back Auto Lock Zips
- Protection: Removable EVO Protectors on the Shoulder, Elbow & Back,
- Other Features: Neoprene Collar & Cuff with Auto Lock Zip / Adjustable Waist / Embossed & Printed Brands / Long & Short Connection Zips for Trouser



Sizes Women: XS to XL

Measurement Fit: 53



AK-1100



AK-1101



About Availability

- MaxDura 600-D Dublan 2500-D Heavy Fabric
- High Visibility: Reflector Front, Sleeves & Back For Night Vision
- Lining: Water Proof Rissa With Sealing Tape Fix Air Mesh "soft touch"
- Lining: Removable Thermal Quilt / Mobile & Stuff Pockets
- Ventilation: Air-vent Front & Back Auto Lock Zips
- Protection: Removable EVA Protectors on the Shoulder, Elbow & Back,
- Other Features: Neoprene Collar & Cuff with Auto Lock Zip / Adjustable Waist TPR & Printed Brands Long & Short Connection Zippis for Trouser



Sizes Men: XS to 4 XL
 Sizes Women: XS to XL
 Measurement Fit: 53



AK-1102



AK-1103



About Availability

- MaxDura 600-D & 1000 -D / Soft Shell Dublan 2500-D Heavy Fabric
- High Visibility: Reflector Front, Sleeves & Back For Night Vision
- Lining: Water Proof Rissa With Sealing Tape Fix Air Mesh "soft touch"
- Lining: Removable Thermal Quilt / Mobile & Stuff Pockets
- Ventilation: Air-vent Front & Back Auto Lock Zips
- Protection: Removable EVA Protectors on the Shoulder, Elbow & Back,
- Other Features: Neoprene Collar & Cuff with Auto Lock Zip / Adjustable Waist TPR & Printed Brands Long & Short Connection Zippers for Trouser



Sizes Men: XS to 4 XL
 Sizes Women: XS to XL
 Measurement Fit: 53



AK-1104



AK-1105



About Availability

- MaxDura 600-D & 1000 -D / Soft Shell Dublan 2500-D Heavy Fabric
- High Visibility: Reflector Front, Sleeves & Back For Night Vision
- Lining: Water Proof Membrane With Sealing Tape Fix Air Mesh "soft touch"
- Lining: Removable Thermal Quilt / Mobile & Stuff Pockets
- Ventilation: Air-vent Front & Back Auto Lock Zips
- Protection: Removable EVA Protectors on the Shoulder, Elbow & Back,
- Other Features: Neoprene Collar & Cuff with Auto Lock Zip / Adjustable Waist TPR & Printed Brands Long & Short Connection Zippers for Trouser



Sizes Men: XS to 4 XL
 Sizes Women: XS to XL
 Measurement Fit: 53



AK-1151



AK-1152

About Availability

- MaxDura 600-D & 1000 -D / Nylon Dublan 2500-D Heavy Fabric
- High Visibility: Reflector Front, Sleeves & Back For Night Vision
- Lining: Water Proof Membrane With Sealing Tape Fix Air Mesh "soft touch"
- Lining: Removable Thermal Quilt / Mobile & Stuff Pockets
- Ventilation: Air-vent Front & Back Auto Lock Zips
- Protection: Removable EVA Protectors on the Shoulder, Elbow & Back,
- Other Features: Neoprene Collar & Cuff with Auto Lock Zip / Adjustable Waist TPR & Printed Brands Long & Short Connection Zippers for Trouser



Sizes Men: XS to 4 XL
 Sizes Women: XS to XL
 Measurement Fit: 53



AK-1153



AK-1154



About Availability

- MaxDura 600-D & 1000 -D / Dublan 2500-D Heavy Fabric
- High Visibility: Reflector Front, Sleeves & Back For Night Vision
- Lining: Water Proof Membrane With Sealing Tape Fix Air Mesh "soft touch"
- Lining: Removable Thermal Quilt / Mobile & Stuff Pockets
- Ventilation: Air-vent Front & Back Auto Lock Zips
- Protection: Removable EVA Protectors on the Shoulder, Elbow & Back,
- Other Features: Neoprene Collar & Cuff with Auto Lock Zip / Adjustable Waist TPR & Printed Brands Long & Short Connection Zippers for Trouser



Sizes Men: XS to 4 XL
 Sizes Women: XS to XL
 Measurement Fit: 53



AK-1155



AK-1156



About Availability

- MaxDura 600-D & 1000 -D / Nylon / Soft Shell
- Dublan 2500-D Heavy Fabric
- High Visibility: Reflector Front, Sleeves & Back For Night Vision
- Lining: Water Proof Membrane With Sealing Tape Fix Air Mesh "soft touch"
- Lining: Removable Thermal Quilt / Mobile & Stuff Pockets
- Ventilation: Air-vent Front & Back Auto Lock Zips
- Protection: Removable EVA Protectors on the Shoulder, Elbow & Back,
- Other Features: Neoprene Collar & Cuff with Auto Lock Zip / Adjustable Waist TPR & Printed Brands Long & Short Connection Zippers for Trouser



Sizes Men: XS to 4 XL
 Sizes Women: XS to XL
 Measurement Fit: 53



AK-2100



AK-2101

About Availability

- MaxDura 600-D / Nylon / Mash Dublan 2500-D Heavy Fabric
- High Visibility: Reflector Front, Sleeves & Back For Night Vision
- Liner: Water Proof Membrane With Sealing Tape Fix Air Mesh "soft touch" Mobile & Stuff Pockets
- Ventilation: Air-vent Front & Back Auto Lock Zips
- Protection: Removable EVA Protectors on the Shoulder, Elbow & Back,
- Other Features: Neoprene Collar & Cuff with Auto Lock Zip / Adjustable Waist TPR & Printed Brands Long & Short Connection Zippis for Trouser



Sizes Men: XS to 4 XL

Sizes Women: XS to XL

Measurement Fit: 53



AK-2102



**Women Textile
Jackets**



AK-2200

About Availability

- MaxDura 600-D / Nylon / Mash Soft Shell Dublin 2500-D Heavy Fabric
- High Visibility: Reflector Front, Sleeves & Back For Night Vision
- Lining: Water Proof Membrane With Sealing Tape Fix Air Mesh "soft touch"
- Lining: Removable Thermal Quilt / Mobile & Stuff Pockets
- Ventilation: Air-vent Front & Back Auto Lock Zips
- Protection: Removable EVA Protectors on the Shoulder, Elbow & Back,
- Other Features: Neoprene Collar & Cuff with Auto Lock Zip / Adjustable Waist TPR & Printed Brands Long & Short Connection Zips for Trouser



Sizes Men: XS to 4 XL
 Sizes Women: XS to XL
 Measurement Fit: 53



AK-2201



AK-2202



About Availability

- MaxDura 600-D / Nylon / Soft Shell Dublan 2500-D Heavy Fabric
- High Visibility: Reflector Front, Sleeves & Back For Night Vision
- Lining: Water Proof Membrane With Sealing Tape Fix Air Mesh "soft touch"
- Lining: Removable Thermal Quilt / Mobile & Stuff Pockets
- Ventilation: Air-vent Front & Back Auto Lock Zips
- Protection: Removable EVO Protectors on the Shoulder, Elbow & Back,
- Other Features: Neoprene Collar & Cuff with Auto Lock Zip / Adjustable Waist TPR & Printed Brands Long & Short Connection Zips for Trouser



Sizes Women: XS to XL

Measurement Fit: 53



AK-2203



Kids Textile Jackets



AK-2400



About Availability

- MaxDura 600-D / Nylon / Soft Shell Dublan 2500-D Heavy Fabric
- High Visibility: Reflector Front, Sleeves & Back For Night Vision
- Lining: Water Proof Membrane With Sealing Tape Fix Air Mesh "soft touch"
- Lining: Removable Thermal Quilt / Mobile & Stuff Pockets
- Ventilation: Air-vent Front & Back Auto Lock Zips
- Protection: Removable EVO Protectors on the Shoulder, Elbow & Back,
- Other Features: Neoprene Collar & Cuff with Auto Lock Zip / Adjustable Waist TPR & Printed Brands Long & Short Connection Zips for Trouser



Sizes Women: XS to XL

Sizes Kids: 6 to 16

Measurement Fit: 53



AK-2500

AK-2501



About Availability

- MaxDura 600-D & / Nylon / Leather / Dublan 2500-D Heavy Fabric
- High Visibility: Reflector Type/ Reflector Heat Transfer For Night Vision
- Liner: Water Proof Membrane With Sealing Tape Fix Air Mesh "soft touch"
- Lining: Removable Thermal Quilt
- Ventilation: Air-vent Water Proof Auto Lock Zips
- Protection: Removable EVO Protectors on the knee & Hip
- Other Features: Adjustable Waist / Stretch able Panels TPR & Reflector & Printed Brands / Long & Short Connection Zipps for Jacket



Sizes Men: XS / 28 to 4 XL / 42

Sizes Women: XS / 22 to XL / 30

Measurement Fit: 54



AK-2600

About Availability

- MaxDura 600-D & / Nylon / Mash / Dublan 2500-D Heavy Fabric
- High Visibility: Reflector Type/ Reflector Heat Transfer For Night Vision
- Liner: Water Proof Membrane With Sealing Tape Fix Air Mesh "soft touch"
- Lining: Removable Thermal Quilt
- Ventilation: Air-vent Water Proof Auto Lock Zips
- Protection: Removable EVO Protectors on the knee & Hip
- Other Features: Adjustable Waist / Stretch able Panels TPR & Reflector & Printed Brands / Long & Short Connection Zipps for Jacket



Sizes Men: XS / 28 to 4 XL / 42

Sizes Women: XS / 22 to XL / 30

Measurement Fit: 54



AK-2700

AK-2701



Sizes Women: XS / 22 to XL / 30

Measurement Fit: 54

About Availability

- MaxDura 600-D & / Nylon / Dublin 2500-D Heavy Fabric
- High Visibility: Reflector Type/ Reflector Heat Transfer For Night Vision
- Liner: Water Proof Membrane With Sealing Tape Fix Air Mesh "soft touch"
- Ventilation: Air-vent Water Proof Auto Lock Zips
- Protection: Removable EVO Protectors on the knee & Hip
- Other Features: Adjustable Waist / Stretch able Panels TPR & Reflector & Printed Brands / Long & Short Connection Zippis for Jacket

AK-2800



Women Soft Shell
Textile Jackets



AK-2900



About Availability

- Soft Shell Breathable MaxDura 600-D
- Fix Air Mesh "soft touch" / Mobile Pockets, Stuff Pocket
- Ventilation: Air-vent Water Proof Auto Lock Zips
- High Visibility: Reflector Type/ Reflector Heat Transfer For Night Vision
- Protection: Removable EVO Protectors on the Shoulder Elbow & Back.
- Other Features: TPR & Reflector & Printed Brands



Sizes Men: XS to 4 XL
 Sizes Women: XS to XL
 Measurement Fit: 53



AK-3000



Men T Shirts

AK-3100



About Availability

- Fleece Fabric With Kevlar / Nylon Rib / 100% Cotton
- Fix Air Mesh "soft touch"
- Ventilation: Air-vent Water Proof Auto Lock Zips
- High Visibility: Reflector Type For Night Vision
- Protection: Removable EVA Protectors on the Shoulder Elbow & Back.
- Other Features: Embroidery & Reflector & Printed Brands



Sizes Men: XS to 4 XL

Sizes Women: XS to XL

Measurement Fit: 53

AK-3200



Women Kevlar Denim Jackets

AK-3251



About Availability

- Denim With Kevlar Fabric
- Fix Air Mesh "soft touch"
- High Visibility: Reflector Type For Night Vision
- Protection: Removable EVO Protectors on the Shoulder Elbow & Back.
- Other Features: Adjust able Waist / Stretchable Embroidery & Reflector Heat Transfer Brands



Sizes Men: XS to 4 XL
 Sizes Women: XS to XL
 Measurement Fit: 53



AK-3300

AK-3301



About Availability

- Fleece Fabric With Kevlar / Nylon Rib / 100% Cotton
- Fix Air Mesh "soft touch"
- Ventilation: Air-vent Water Proof Auto Lock Zips
- Protection: Removable EVA Protectors on the Knee & Hip.
- Other Features: Embroidery & Reflector & Printed Brands



Sizes Men: XS / 28 to 4 XL / 42
 Sizes Women: XS / 22 to XL / 30
 Measurement Fit: 54



AK-3400

About Availability

- Wind-Stopper / Cotton / Lycra Stretchable
- Reflector Heat Transfer Brands

Sizes Men: XS to 4 XL

Sizes Women: XS to XL

Measurement Fit: 53



AK-3451

About Availability

- Transparent PVC / Taffeta 190 - T Coated Fabric
- Water Proof: **yes**
- Water Proof Auto Lock Zips
- Reflector for Night Safety



Sizes Men: XS to 4 XL
 Sizes Women: XS to XL
 Measurement Fit: 53



AK-3500



AK-3501



About Availability

- Maxdura 600-D Reflector Material
- Air Mesh Soft Touch
- Neoprene Collar Soft Touch

Sizes Men: XS to 4 XL
 Sizes Women: XS to XL
 Measurement Fit: 53



AK-3551



AK-3552

About Availability

- Ploy Air-Mesh / MaxDura 600-D / Lycra Plastic Mold Protector.
- Air Mesh
- Adjustable Waist With Velcro Staps / TPR & Printed Brands



Sizes Men: XS to 4 XL
 Sizes Kids: 8 to 14
 Measurement Fit: 53



AK-3553

Back Protector



AK-3601

AK-3600

About Availability

- Ploy Air-Mesh / MaxDura 600-D / Lycra EVO Protector / Elastic / Velcro.
- Air Mesh
- Adjustable Waist With Velcro Staps / TPR & Printed Brands.



Sizes Men: XS to 4 XL
 Sizes Kids: 8 to 14
 Measurement Fit: 53

AK-3602



AK-3603



Shorts Protector



AK-3650

About Availability

- Air-Mesh / MaxDura 600-D / Lycra EVO / Plastic Protector / Elastic / Velcro.
- Adjustable Waist With Velcro Staps / TPR & Printed Brands.
- Plastic & EVO Protectors On the Hip & Back



Sizes Men: XS to 4 XL
 Sizes Kids: 8 to 14
 Measurement Fit: 53



AK-3700



AK-3701



AK-3702



AK-3703



AK-3704



AK-3705

About Availability

- Air-Mesh / Neopreen / MaxDura 600-D / Plastic Mold Protector / Elastic / Velcro.
- Adjustable Waist With Velcro Staps / TPR & Printed Brands.

Sizes Men: XS to 4 XL
 Sizes Kids: 8 to 14
 Measurement Fit: 53



AK-3750



AK-3751



AK-3752



AK-3753



AK-3754



AK-3755

About Availability

- Neoprene / MaxDura 600-D / Plastic Mold Protector / Elastic / Velcro.
- Adjustable Waist With Velcro Staps / TPR & Printed Brands.

Sizes Men: XS to 4 XL
 Sizes Kids: 8 to 14
 Measurement Fit: 53



AK-3800



AK-3801



AK-3802



AK-3803

About Availability

- Cow-Hide Aniline Leather / MaxDura 600-D Reflector / TPU & TPR Mould Protector.
- Special Touch Leather on the Finger For Smart Phone
- Use Liner Poly - Mide Soft touch.
- Ventilation Air-Vent With TPU Tip.
- Protection TPU & Metal With Foam Knuckle & Fingers Mould Protector.
- High Visibility Reflector For Night Vision.
- Other Features Double Layer Anti-Slip Palm Reinforcement Velcro Straps / TPR / Embossed & Brands.



Sizes Men: XS to 4 XL

Sizes Women: XS to XL

Measurement Fit: 54 To 55



AK-3804



AK-3805



AK-3806



AK-3807

About Availability

- Cow-Hide Aniline Leather / MaxDura 600-D / TPU Mould Protector.
- Special Touch Leather on the Finger For Smart Phone
- Use Liner Poly - Mide Soft touch.
- Ventilation Air-Vent With TPU Tip.
- Protection TPU & Metal With Foam Knuckle & Fingers Mould Protector.
- High Visibility Reflector For Night Vision.
- Other Features Double Layer Anti-Slip Palm Reinforcement Velcro Straps / TPR / Embossed & Brands.



Sizes Men: XS to 4 XL

Sizes Women: XS to XL

Measurement Fit: 54 To 55



AK-3808



AK-3809

Leather & Textile Short Gloves



AK-3900



AK-3901

About Availability

- Cow-Hide Aniline Leather / MaxDura 600-D Amara / Forway / Reflector TPU & TPR Mould Protector.
- Special Touch Leather on the Finger For Smart Phone
- Use Liner Poly - Mide Soft touch.
- Ventilation Air-Vent With TPU Tip.
- Protection TPU & Metal With Foam Knuckle & Fingers Mould Protector.
- High Visibility Reflector For Night Vision.
- Other Features Double Layer Anti-Slip Palm Reinforcement Velcro Straps / TPR / Embossed & Brands.



Sizes Men: XS to 4 XL

Sizes Women: XS to XL

Measurement Fit: 54 To 55



AK-3902



AK-3903



AK-3904



AK-3905

About Availability

- Cow-Hide Aniline Leather / Amara / Forway / Reflector TPR & TPU Leather Mould Protector.
- Special Touch Leather on the Finger For Smart Phone
- Use Liner Poly - Mide Soft touch.
- Ventilation Air-Vent With TPU Tip.
- Protection TPU & Metal With Foam Knuckle & Fingers Mould Protector.
- High Visibility Reflector For Night Vision.
- Other Features Double Layer Anti-Slip Palm Reinforcement Velcro Straps / TPR / Embossed & Brands.



Sizes Men: XS to 4 XL

Sizes Women: XS to XL

Measurement Fit: 54 To 55



AK-3910



AK-3911



AK-3912



AK-3913

About Availability

- Cow-Hide Aniline Leather / Amara / Forway / Reflector TPU Leather Mould Protector.
- Special Touch Leather on the Finger For Smart Phone
- Use Liner Poly - Mide Soft touch.
- Ventilation Air-Vent With TPU Tip.
- Protection TPU & Metal With Foam Knuckle & Fingers Mould Protector.
- High Visibility Reflector For Night Vision.
- Other Features Double Layer Anti-Slip Palm Reinforcement Velcro Straps / TPR / Embossed & Brands.



Sizes Men: XS to 4 XL

Sizes Women: XS to XL

Measurement Fit: 54 To 55



AK-3914



AK-3915



AK-3916



AK-3917

About Availability

- Cow-Hide Aniline Leather / Amara / Forway / Reflector TPR & TPU Mould Protector.
- Special Touch Leather on the Finger For Smart Phone
- Use Liner Poly - Mide Soft touch.
- Ventilation Air-Vent With TPU Tip.
- Protection TPU & Metal With Foam Knuckle & Fingers Mould Protector.
- High Visibility Reflector For Night Vision.
- Other Features Double Layer Anti-Slip Palm Reinforcement Velcro Straps / TPR / Embossed & Brands.



Sizes Men: XS to 4 XL

Sizes Women: XS to XL

Measurement Fit: 54 To 55



AK-3918



AK-3919



AK-3920



AK-3921

About Availability

- Cow-Hide Aniline Leather / Amara / Forway / Reflector TPU Mould Protector.
- Special Touch Leather on the Finger For Smart Phone
- Use Liner Poly - Mide Soft touch.
- Ventilation Air-Vent With TPU Tip.
- Protection TPU & Metal With Foam Knuckle & Fingers Mould Protector.
- High Visibility Reflector For Night Vision.
- Other Features Double Layer Anti-Slip Palm Reinforcement Velcro Straps / TPR / Embossed & Brands.



Sizes Men: XS to 4 XL

Sizes Women: XS to XL

Measurement Fit: 54 To 55



AK-3922



AK-3923



AK-3924



AK-3925



About Availability

- Cow-Hide Aniline Leather / Soft Shell **Breathable** Reflector TPR & TPU Leather Mould Protector.
- Special Touch Leather on the Finger For Smart Phone
- Liner Water Proof Membrane / Air Mesh With Foam Soft Touch
- Ventilation Air-Vent With TPU Tip.
- Protection TPU & Metal With Foam Knuckle & Fingers Mould Protector.
- High Visibility Reflector For Night Vision.
- Other Features Double Layer Anti-Slip Palm Reinforcement Velcro Straps / TPR / Embossed & Brands.



Sizes Men: XS to 4 XL

Sizes Women: XS to XL

Measurement Fit: 54 To 55



AK-4000



AK-4001



AK-4002

Leather & Textile Women Gloves



AK-4100



AK-4102



AK-4103

About Availability

- Cow-Hide Aniline Leather / Soft Shell **Breathable** / Air Mesh / Amara / Neopren / Reflector TPR & TPU Mould Protector.
- Special Touch Leather on the Finger For Smart Phone Liner Water Proof Membrane / Air Mesh With Foam Soft Touch / Poly Mide Soft Touch
- Ventilation Air-Vent With TPU Tip.
- Protection TPU & Metal With Foam Knuckle & Fingers Mould Protector.
- High Visibility Reflector For Night Vision.
- Other Features Double Layer Anti-Slip Palm Reinforcement Velcro Straps / TPR / Embossed & Brands.



Sizes Men: XS to 4 XL

Sizes Women: XS to XL

Measurement Fit: 54 To 55

AK-4300



AK-4301



AK-4302



AK-4303



About Availability

- Poly-Mesh / Forway Rib Sublimated / Embossed Neopren / Amara / TPR Direct-inject / Silicone.
- Ventilation Poly Air-Mesh.
- Protection TPR Direct-Inject Protector on Knuckle & Fingers.
- High Visibility Reflector For Night Vision.
- Other Features Double Layer Amara Palm Reinforcement Velcro Straps / TPR Direct-inject Brands.



Sizes Men: XS to 4 XL
 Sizes Kids: 6 to 16
 Measurement Fit: 55

AK-4304



AK-4305



AK-4306



AK-4307

About Availability

- Poly-Mesh / Forway Rib Sublimated / Embossed Neopren / Amara / TPR Direct-inject / Silicone.
- Ventilation Poly Air-Mesh.
- Protection TPR Direct-Inject Protector on Knuckle & Fingers.
- High Visibility Reflector For Night Vision.
- Other Features Double Layer Amara Palm Reinforcement Velcro Straps / TPR Direct-inject Brands.



Sizes Men: XS to 4 XL
 Sizes Kids: 6 to 16
 Measurement Fit: 55



AK-4401



AK-4400

About Availability

- Jersey: Micro-Mesh / Lycra Sublimation Printed
- Trouser: MaxDura 600-D & 1000-D / Ploy Mesh / Sublimation / Dublan 2500-D Heavy Fabric / Reflector / TPR Logos
- Liner Air-Mas Sublimated Soft Touch
- Ventilation: Air-Mesh
- Protection: EVO Hip
- Other Features: Adjustable Waist / TPR & Printed Brands

Sizes Jersey: XS to 4 XL
 Sizes Trouser: 28 to 40
 Jersey Kids: 6 to 16
 Trouser Kids: 6 to 16
 Measurement Fit: 55



AK-4600



AK-4601



AK-4602



AK-4603

About Availability

- High Quality Leather / TPR Pad / TPU Mould Protection
- TPR Side Sliders / Non-Slip Rubber Sole / Reflector.
- Liner: Mesh with Foam Liner / Water Proof Lining.
- High Visibility: Reflector for Night Vision.
- Other Features: Adjustable Velcro Strap / TPU Mould / TPR Printed Brands.



Sizes Men: 39 to 47

Sizes Women: 36 to 42



AK-4604



AK-4605



AK-4606



AK-4607

About Availability

- High Quality Leather / TPR Pad / TPU Mould Protection
- TPR Side Sliders / Non-Slip Rubber Sole / Reflector.
- Liner: Mesh with Foam Liner / Water Proof Lining.
- High Visibility: Reflector for Night Vision.
- Other Features: Adjustable Velcro Strap / TPU Mould / TPR Printed Brands.



Sizes Men: 39 to 47

Sizes Women: 36 to 42



AK-4608



AK-4609



AK-4610



AK-4611

About Availability

- High Quality Leather / Air-Mesh / TPR Pad / TPU Mould Protection TPR Side Sliders / Non-Slip Rubber Sole / Reflector.
 - Liner: Mesh with Foam Liner / Water Proof Lining.
 - High Visibility: Reflector for Night Vision.
- Other Features: Adjustable Velcro Strap / TPU Mould / TPR Printed Brands.



Sizes Men: 39 to 47

Sizes Women: 36 to 42



AK-4800



AK-4801



AK-4802



AK-4803



AK-4804

About Availability

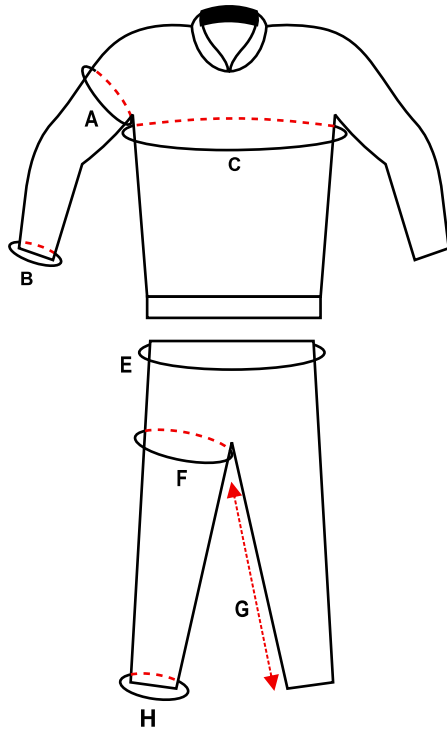
- Durable MaxDura 1000-D / Reflector
- Liner: Water Proof PVC Coated Rain Cover
- High Visibility: Reflector For Night Vision
- Other Features: Adjustable Straps / Mangent to Fix Bike / Anti-Slip on Bottom of bag / Straps to Used Bottom Back / Removable Base Plate With Map Holder.



Size Chart Measure to Fit

Men | Leather Suits

Measured outside of leather Suits | All details are in Centimeters!



	Size	46	48	50	52	54	56	58
A	Top Sleeve	37 cm	38 cm	39 cm	40 cm	40 cm	41 cm	42 cm
B	Cuff	22 cm	23 cm	23 cm	24 cm	25 cm	25 cm	26 cm
C	Chest	99 cm	104 cm	109 cm	113 cm	118 cm	123 cm	128 cm
E	Waist	84 cm	88 cm	92 cm	97 cm	101 cm	105 cm	110 cm
F	Thigh	58 cm	60 cm	62 cm	64 cm	66 cm	67 cm	68 cm
G	Inseam	71 cm	73 cm	75 cm	76 cm	78 cm	79 cm	80 cm
H	End Leg	29 cm	30 cm	30 cm	30 cm	31 cm	32 cm	33 cm

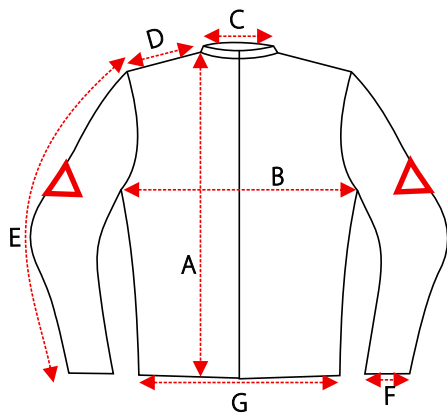
Women | Leather Suits

Measured outside of leather Suits | All details are in Centimeters!

	Size	33	36	38	40	42	44
A	Top Sleeve	33 cm	34 cm	35 cm	36 cm	37 cm	38 cm
B	Cuff	22 cm	22 cm	23 cm	23 cm	24 cm	24 cm
C	Chest	91 cm	96 cm	101 cm	107 cm	112 cm	117 cm
E	Waist	72 cm	76 cm	81 cm	86 cm	90 cm	95 cm
F	Thigh	53 cm	54 cm	55 cm	56 cm	57 cm	58 cm
G	Inseam	70 cm	72 cm	73 cm	74cm	75 cm	76 cm
H	End Leg	28 cm	28 cm	29 cm	29 cm	30 cm	30 cm

Men | Jackets Measurement

All measurements in Centimeters!

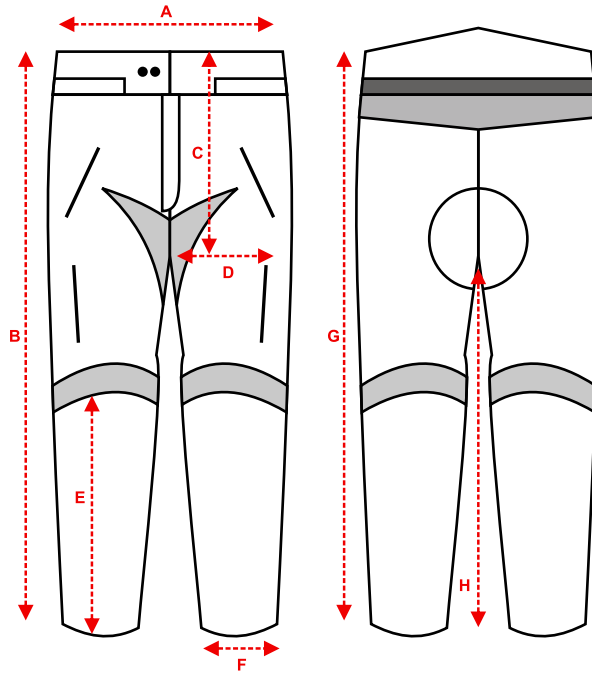


	Measurements	XS	S	M	L	XL	2XL	3XL	4XL
A	Front Length	63	64	65	66.5	68	69.5	71	72.5
B	Chest	56	58	60	62	64	66	68	70
C	Collar	17	17.5	18	18.5	19	19.5	20	20.5
D	Shoulder	17	17.5	18	18.5	19	19.5	20	20.5
E	Sleeve Length	62	63	64	65	66	67	68	69
F	Cuff	24.5	25	25.5	26	26	26.5	27	27
G	Bottom	50	52	54	56	58	60	62	64

Women | Jackets Measurement

All Measurements in Centimeters!

	Measurements	2XS	XS	S	M	L	XL	2XL
A	Front Length	59	60	61	62.5	64	65.5	67
B	Chest	46	48	50	52	54	56	58
C	Collar	16	16.5	17	17.5	18	18.5	19
D	Shoulder	14	14.5	15	15.5	16	16.5	17
E	Sleeve Length	60	61	62	63	64	65	66
F	Cuff	23	23.5	24	24.5	25	25.5	26
G	Bottom	44	46	48	50	52	54	56



Men | Trousers Measurement

All measurements in Centimeters!

	SIZE	28/XS	30/S	32/M	34/L	36/XL	38/2XL	40/2XL	44/2XL
A	Waist	41	43	45	47	49	51	53	55
B	Front Length	107	108.5	110	111.5	113	114.5	116	117.5
C	Top to inseam	29	29.5	30	30.5	31	31.5	32	32.5
D	Thai	66	68	70	72	74	76	78	80
E	Knee to bottom	57	58	59	60	61	62	63	64
F	Bottom	38	39	40	41	42	43	44	45
G	Back Length	107	108.5	110	111.5	113	114.5	116	117.5
H	Inseam	83	84	85	86	87	88	89	90

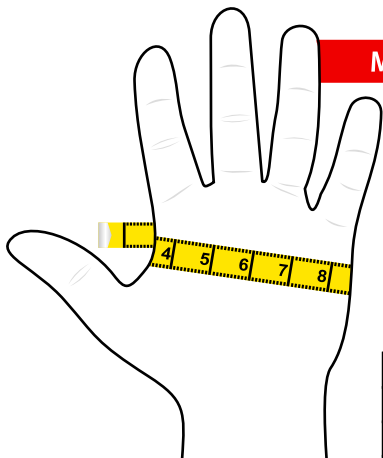
Women | Trousers Measurement

All measurements in Centimeters!

	SIZE	36/2XS	38/XS	40/S	42/M	44/L	46/XL
A	Waist	36	38	40	42	44	46
B	Front Length	94.5	96	97.5	99	100.5	102
C	Top to inseam	23.5	24	24.5	25	25.5	26
D	Thai	63	65	67	69	71	73
E	Knee to bottom	48	49	50	51	52	53
F	Bottom	35	37	38	39	40	41
G	Back Length	94.5	96	97.5	99	100.5	102
H	Inseam	71	72	73	74	75	76

Men's Glove Measurement

Measure around the hand at the fullest point excluding thumb.



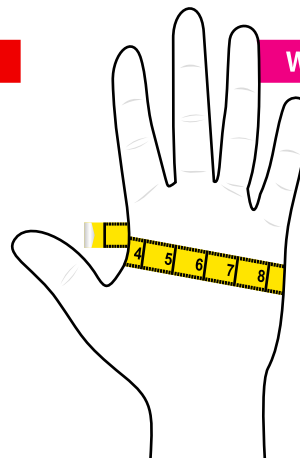
All measurements in Inches!

Use chart to determine size:
SIZE HAND MEASUREMENTS

SM	7.5"
MD	8.5"
LG	9.5"
XL	10.5"
2XL	11.5"
3XL	12.5"

Women's Glove Measurement

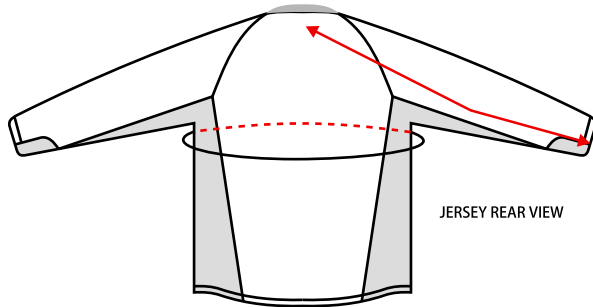
Measure around the hand at the fullest point excluding thumb.



All measurements in Inches!

Use chart to determine size:
SIZE HAND MEASUREMENTS

SM	6.5"
MD	7"
LG	7.5"
XL	8"



Jerseys | Adult

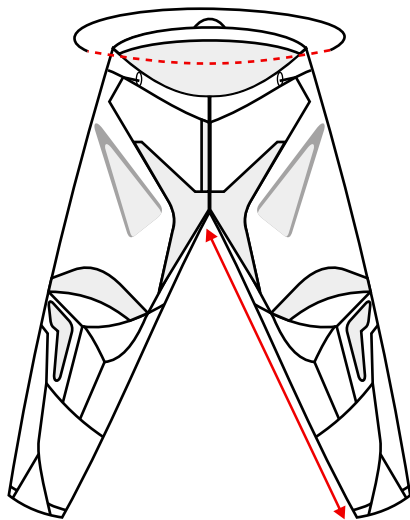
All measurements in Centimeters!

SIZE	S	M	L	XL	XXL
Chest	83-88	91-99	101-106	109-117	119-127
Arm	80-82	83-85	85-86	87-88	90-91

Jerseys | Youth

All measurements in Centimeters!

SIZE	S	M	L	XL	
Chest	67-75	76-81	83-98	91-96	
Arm	65	71	74	78	



Pants | Adult

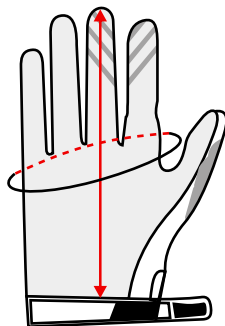
All measurements in Centimeters!

SIZE	28	30	32	34	36	38	40
Waist	67-73	73-78	78-83	83-88	88-93	93-99	99-104
Inseam	73-74	74-76	76-77	77-78	78-80	80-81	81-82

Pants | Youth

All measurements in Centimeters!

SIZE	6	8	10	12	14
Waist	48-53	53-58	58-63	63-68	68-73
Inseam	57	59	62	67	69



Gloves | Adult

All measurements in Inches!

SIZE	S/8	M/9	L/10	XL/11	XXL/12
Width	7"	8"	9"	10"	11"
Length	8"	8.5"	9"	9.5"	10"

Gloves | Youth

All measurements in Inches!

SIZE	6/7	8/9	10/11	12/13
Width	5.5"	6"	6.5"	7"
Length	6"	6.5"	7"	7.5"



Head Office:

Sialkot Road, Sambrial,
Postal Code: 51310

Contact # : +92 311 7755095 +92 331 4453721

Germany Office:

ROSSDÖRFER STR # 24
Postal Code: 64287 DARMSTADT
Contact #: +4917610584411

Italy Office:

City napo iprovincha Arzano,
via sette re, # 48, Postal Code: 80123
Contact #: +393333207448

Email: info@akamaigears.com
web: www.akamaigears.com